

ESTIMATION OF CRITICAL DROP HEIGHT

L/0085910-1

Applicant:

GOMYFLOOR INDUSTRIAS DEL LEVANTE SLU

D. Miguel Ángel Córdoba

Aljibe Largo, 5, 30739 San Javier (Murcia)

Date of service: 28/07/2023

1. MANUFACTURER'S DESCRIPTION OF THE SAMPLES REFERENCED BY THE

References:

- Gomy Floor H²O (Ref: GF-001) (20 mm)
- Gomy Floor H²O (Ref: GF-002) (30 mm)

These are samples for impact-absorbing surfacing for playground surfaces.

2. OBJECT

Estimates of 2 samples of playground surfacing for the determination of Critical Fall Height.

NOTE: These pre-tests are not a complete test, as only the critical drop height is determined from 3 selected points in the sample.

3. REFERENCE DOCUMENTS

The following standard is taken as a reference:

UNE EN 1177:2018+AC:2019 "Impact absorbing playground surfacing - Test methods for the determination of impact attenuation".

In this case, estimates are made according to:

- **Method 1- Determination of the critical fall height (3 positions only)**

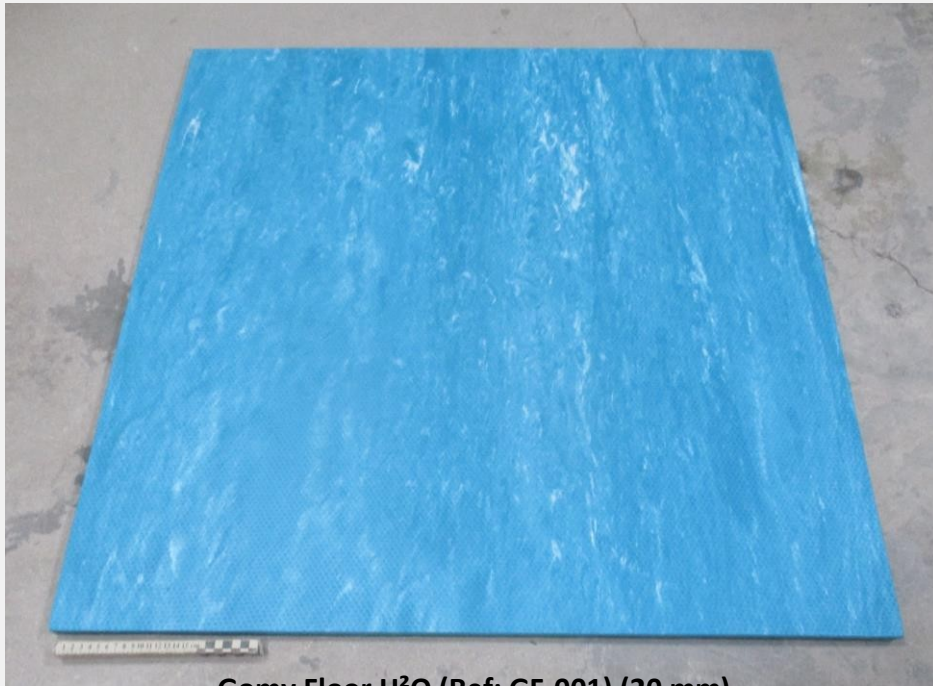
4. RESULTS

The results of the estimates made for each benchmark are shown below:

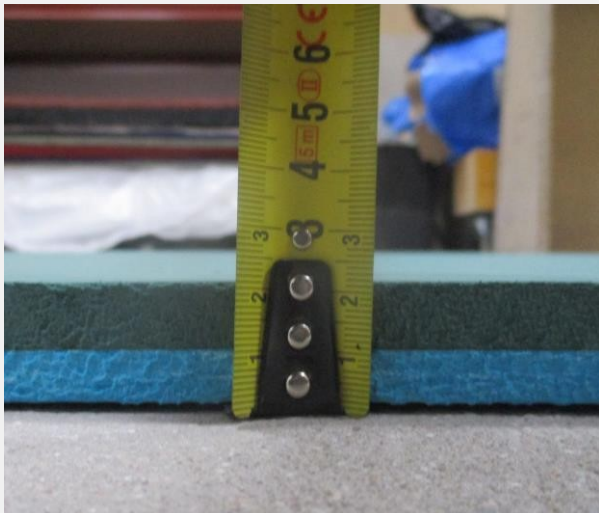
4.1 Results on sample Gomy Floor H²O (Ref: GF-001) (20 mm)

Point	No. fall	Gmax	HIC	Height (m)	Critical drop height (m)
1	1	231	778	0,74	0,73
	2	254	874	0,74	
	3	292	1066	0,74	
	4	324	1246	0,75	
2	5	231	778	0,74	0,74
	6	268	940	0,74	
	7	290	1060	0,75	
	8	330	1292	0,75	
3	9	220	730	0,74	0,74
	10	259	907	0,74	
	11	297	1091	0,75	
	12	320	1238	0,75	

CRITICAL FALL HEIGHT: 0,73 m



Gomy Floor H²O (Ref: GF-001) (20 mm)



Gomy Floor H²O (Ref: GF-001) (20 mm)

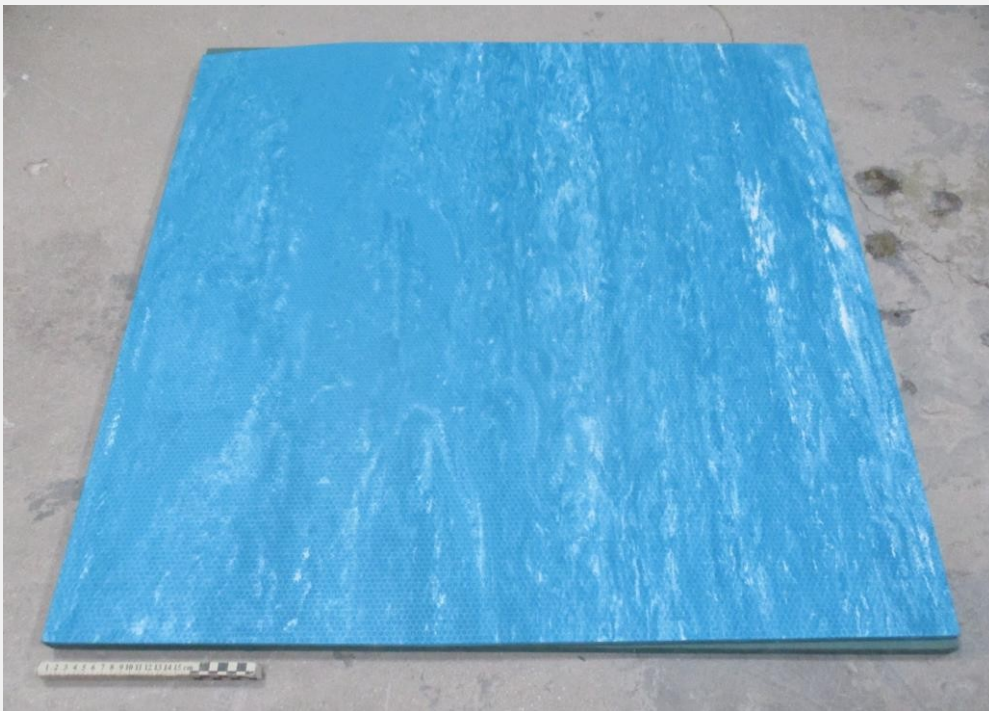


Gomy Floor H²O (Ref: GF-001) (20 mm)

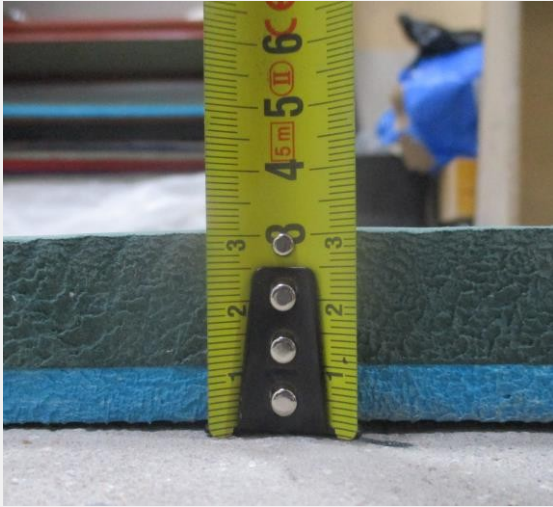
4.2 Results on sample Gomy Floor H²O (Ref: GF-002) (30 mm)

Point	No. fall	Gmax	HIC	Height (m)	Critical drop height (m)
1	1	175	776	1,2	1,23
	2	202	932	1,24	
	3	237	1145	1,29	
	4	250	1226	1,31	
2	5	171	762	1,2	1,23
	6	201	930	1,24	
	7	227	1092	1,28	
	8	247	1216	1,31	
3	9	168	744	1,2	1,25
	10	189	865	1,24	
	11	231	1102	1,28	
	12	261	1283	1,31	

CRITICAL FALL HEIGHT: 1,23 m



Gomy Floor H²O (Ref: GF-002) (30 mm)



Gomy Floor H²O (Ref: GF-002) (30 mm)



Gomy Floor H²O (Ref: GF-002) (30 mm)

5. SUMMARY OF RESULTS

COMPARATIVE TABLE

<u>Reference</u>	<u>Critical drop height</u>
Gomy Floor H ² O (Ref: GF-001) (20 mm)	0,73 m
Gomy Floor H ² O (Ref: GF-002) (30 mm)	1,23 m

**AJU, Institute of Product Technology
children and leisure**

Stamp



Technical Director

Ana Sánchez Reche

Responsible technician

Urban Arenas

PRESCRIPTIONS

1.- This service includes the estimation of the critical height of fall applied to the above-mentioned sample/s, based on the information submitted by the applicant. Complete testing has not been carried out and therefore the results are not conclusive.

This document is not a certificate of conformity with respect to the standards or directives cited. It does not imply an assessment of production.

3.- These preliminary tests have been carried out by a qualified technical team. This document is not binding, its purpose is to express the preliminary results of the product on the basis of a few tests.

4.- The total or partial reproduction of this document for advertising purposes is strictly forbidden without the express authorisation of AIJU.

5.- The applicant undertakes to notify this centre of any complaint received in relation to this document, exempting this centre from any responsibility in the event of failure to do so, and taking into account the aforementioned conservation periods.

AIJU is not responsible for subsequent changes to the samples, nor for any misinterpretation or misuse that may be made of this document.

7.- This Institute may include in its documents results, analyses, etc., any other assessment it deems necessary or convenient, even if it has not been expressly requested.

AIJU will not disclose confidential information to third parties about the products described in this report; using the confidential information provided to carry out the application.

9.- In order to improve customer service, AIJU offers a complaints service.